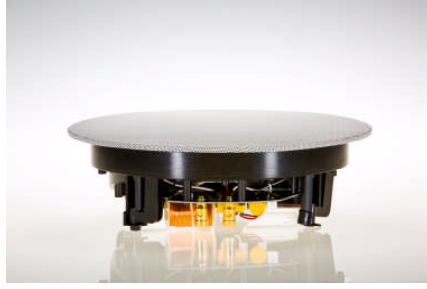




C34E OWNERS MANUAL



Intro:

Of the gazillions of in-ceiling speakers to choose from, we're honored that you've selected the RSL C34E. You are about to find out what all of the glowing reviews are about.

The C34E was developed as an in-ceiling alternative for high-end stereo and home theater applications. We gave the C34E a number of sonic advantages to improve clarity, detail, and dynamics. Since its introduction, audio enthusiasts have made the C34E a top choice for stereo, home theater, Dolby Atmos, and DTS:X.

Included in box:

- RSL C34E in-ceiling speaker units
- Installation template
- Magnetic grill
- Short mounting arms for ceilings thicker than 3/4"

Installation Info:

- The woofers and tweeter are mounted on a **15 degree-angled baffle** that allows the C34Es to be aimed toward your main listening position.
- **Always aim the C34Es directly toward your main listening position.** This is the intended orientation of the speakers.
- To reduce sound leakage into adjacent rooms, install extra insulation in the cavity surrounding the rear of the speaker.
- In excessively dusty environments, protective speaker covers are recommended to keep dust off the speakers. You can also install plastic sheeting over the surrounding insulation to keep the speaker clean.
- The C34E **does not require a backer box** and can be installed directly into open space. If a backer box is necessary, make the box as large as possible within the available space. Lining the box with insulation is also recommended.

For stereo use without a subwoofer, a minimum internal dimension of 1 cubic foot is necessary for proper bass response from the speaker.

- If additional insulation is required for your installation, we recommend using denim insulation. Denim insulation is easy to work with, does a great job absorbing sound, and is readily available on the internet and in home improvement stores.
- Once installed, C34Es can be easily removed for cleaning or adjusting. Compressed air is recommended for cleaning. Do not put C34Es in your washing machine. Do not hose them down in the back yard.

Installation

For wiring, we recommend using high quality 12 gauge speaker wire.

1. Remove the magnetic grill from the speaker.
2. Locate the cardboard template included with the speakers, and place it on the ceiling exactly where you want the speaker to be installed.
3. Hold the template in place and trace around it with a pencil. This will be your cutting line.
4. **WAIT!** Before cutting, you'll want to survey the area inside the ceiling to make sure its clear of any wires, pipes, or other potentially-hazardous obstructions.
 - Drill a hole in the center of the outline that you traced with the template.
 - Insert a bent coat hanger, or a wire, into the hole to make sure that the entire area behind the intended speaker location is free of obstructions. Also make sure that there is sufficient depth to accommodate the rear of the speaker.
5. When you have determined that the entire area is free from obstructions, proceed to cut along the line using a drywall saw. If possible, try to cut just inside the line to avoid making the hole too large (it's always easier to take a little more off, than to put some back on).
6. Run the speaker wire from your receiver to the hole in the ceiling where the speaker will go.
7. Now connect the speaker wire from your receiver to the terminals on your speaker.
 - The C34Es are equipped with push terminals. You will need to push down on the terminal until the insertion hole is open enough to receive the bare end of speaker wire.
 - Double-check that you have connected positive (+) to positive (red), and negative (-) to negative (black)
 - Make sure both the positive and negative wires are properly inserted and will not easily disconnect.
 - **Also, make sure there are no loose wire strands that could come in contact with the wire or terminal of the opposite polarity. This will cause a short and may damage your equipment.**
8. Now that you've connected the wire, you can grab a screwdriver and prepare to install the speaker. Insert the speaker into the hole and tighten each of the four anchor screws until you begin to feel resistance. **Do not over tighten.**
9. When each of the four anchor screws are tightened properly, you can place the magnetic grill over the speaker until it sticks.
10. Now put the screwdriver down, take a deep breath, and admire your work! You're finished! Feel free to give yourself a pat on the back.

Caution: Repeated back-patting may cause bruising, swelling, and mild tenderness if excess force is applied. Discontinue patting if your hand experiences fatigue, numbness, or loss of motor function. Consult your doctor to see if gentle back-patting is right for you.

Note: The RSL C34E speakers easily removable and re-installable if necessary. To remove, hold the speaker with one hand and loosen each of the four screws with the other until the speaker is no longer anchored. Gently ease the C34e out of the ceiling and disconnect the speaker wire.

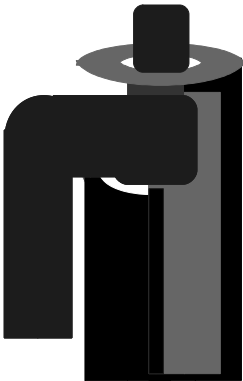
Thick-Ceiling Mounting-Arm Instructions

Standard-Ceiling Arm

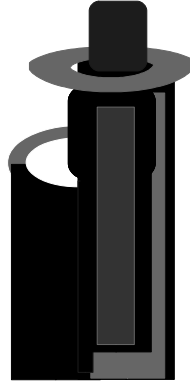


Thick-Ceiling Arm

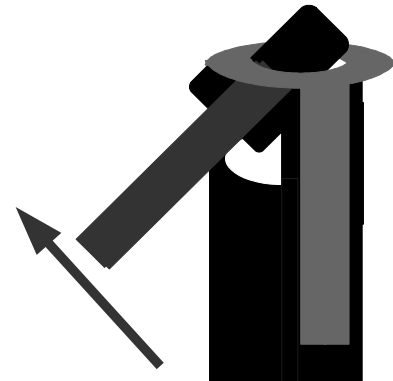
The standard mounting arms of the RSL C34E accommodate ceilings with a maximum thickness of 3/4 inch. For ceilings with a thickness (up to 2 inches), replace the standard mounting arms with the shorter ones that are included with your speaker.



Step 1: Remove 4 long screws from the front of the speaker that attach to the mounting arms.



Step 2: Rotate the mounting arms 90 degrees so that they point to the outside of the speaker.



Step 3: Twist the mounting arm in the direction shown until it clears and you can remove it.

Step 4: Installation of the shorter thick-ceiling arms is the opposite of above. Insert the top of the arm through the retaining ring and twist down. Then reinstall the 4 long screws onto the front of the speaker.

Grill Painting Instructions

To paint the grill, first remove the fabric lining from the inside of the grill. Use spray-paint; applying light coats until the grill becomes the desired color. **Be careful not to clog the grill holes.** They need to remain open for the sound to travel. If holes become inadvertently covered with paint, clear them with a needle.

When finished, the fabric lining can be either re-applied or discarded. The fabric is provided to prevent the black baffle of the speaker from being visible through the grill. It does not affect sound quality.

Specifications

Two – 4 1/2" woofers— Cone Material: Polypropylene

One 7/8" soft-dome tweeter— Dome Material: Silk

Crossover: Hybrid 6/12 db/Octave 2,500 Hz With Air Core Inductors And Polypropylene Capacitors

Grill Fastened By Neodymium Magnets

Overall Dimensions: Outer Diameter: 11 5/8" Height: 3 3/4" Mounting Hole: Diameter: 10 1/8" Mounting Height: 3 7/16" Weight: 4 1/4 lbs.

Impedance: 8 ohms

Peace-Of-Mind Warranty

We've worked countless hours without food, sleep, or television to build speakers that will serve you well for many years. However, in the unlikely event a speaker fails and it's our fault, we'll fix it for free.

Speakers are warranted for 5 years; electronics are warranted for 2 years.

Here are the terms (our lawyers made us do this):

RSL warranties your speakers for a period of 5 years from the date of purchase. We warranty our subwoofer amplifiers for a period of 2 years from the date of purchase. Our products are warranted to be free of defects in original materials and workmanship. Our warranties apply to the original purchaser. To obtain warranty service, we ask you to help us out with the following:

1. Be able to furnish a copy of your sales invoice. However, if you can't find it, we'll do our best to fire up the computer and, if Windows doesn't crash again, we'll look it up for you.
2. Return authorization must first be obtained by contacting us before sending your speakers to us. They must be properly packed.
3. Our speakers were designed for residential stereo or home theater use and must be used in this manner. They were not specifically designed for public address, musical instrument amplification, or other commercial or high-intensity applications. Such use is not covered under warranty.
4. Speakers returned under the terms of the warranty will be repaired or replaced at our option. We will pay for shipping the repaired product back to you if you live in the Continental U.S. You are responsible for pre-paying the shipping to us. Speakers that have been abused, operated improperly, improperly packed, tampered with, insulted or opened (without our prior permission) will not be repaired under warranty. This warranty does not cover damage caused by the use of faulty or improper audio/video components.
5. This is the total warranty. There are no other warranties, expressed or implied. No responsibility is assumed for any incidental or consequential damages. We are not responsible for your neighbors overstaying their welcome at your house to listen to your new home theater system. This warranty gives you specific legal rights, and you may have other rights which vary from state to state.

If you require service please contact us through our website or by phone (we promise to be nice about it, even if you did something silly).



26500 W. Agoura Road

Suite 571

Calabasas, CA 91302

(800)905-5485

www.rslspeakers.com